

Sense of africa

more than just a journey ...



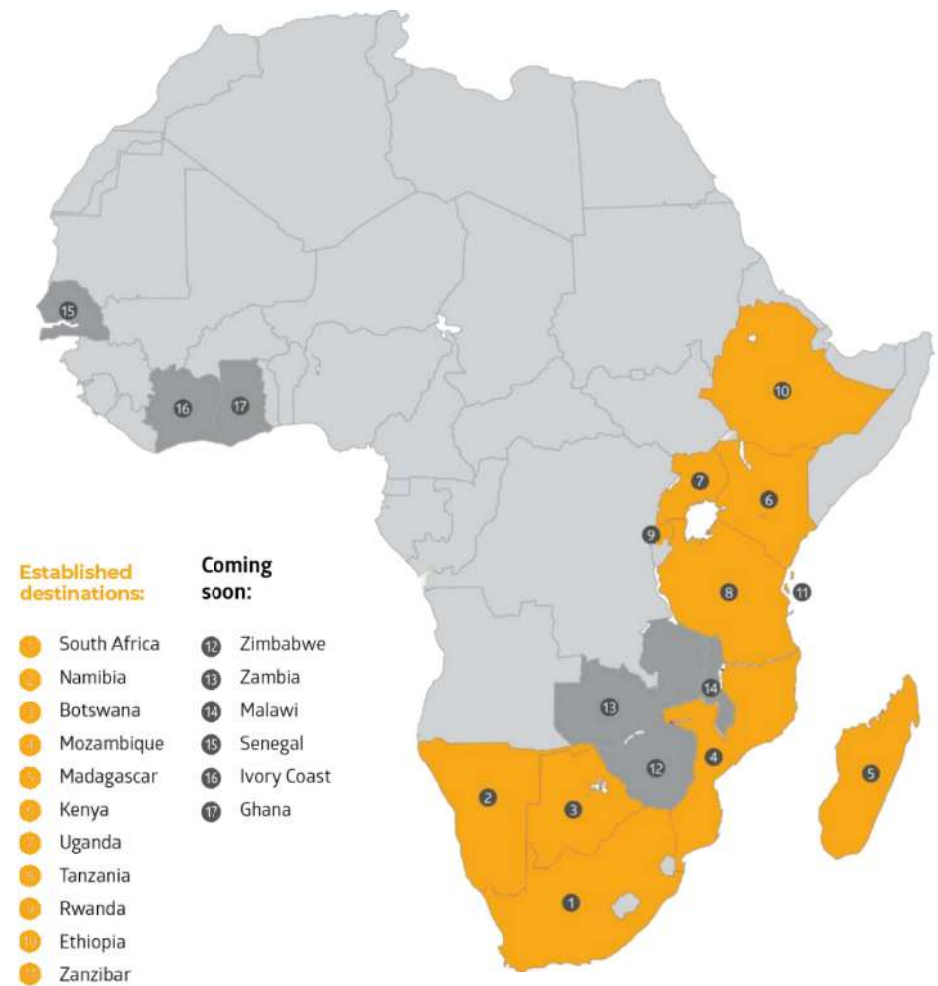
WHO WE ARE

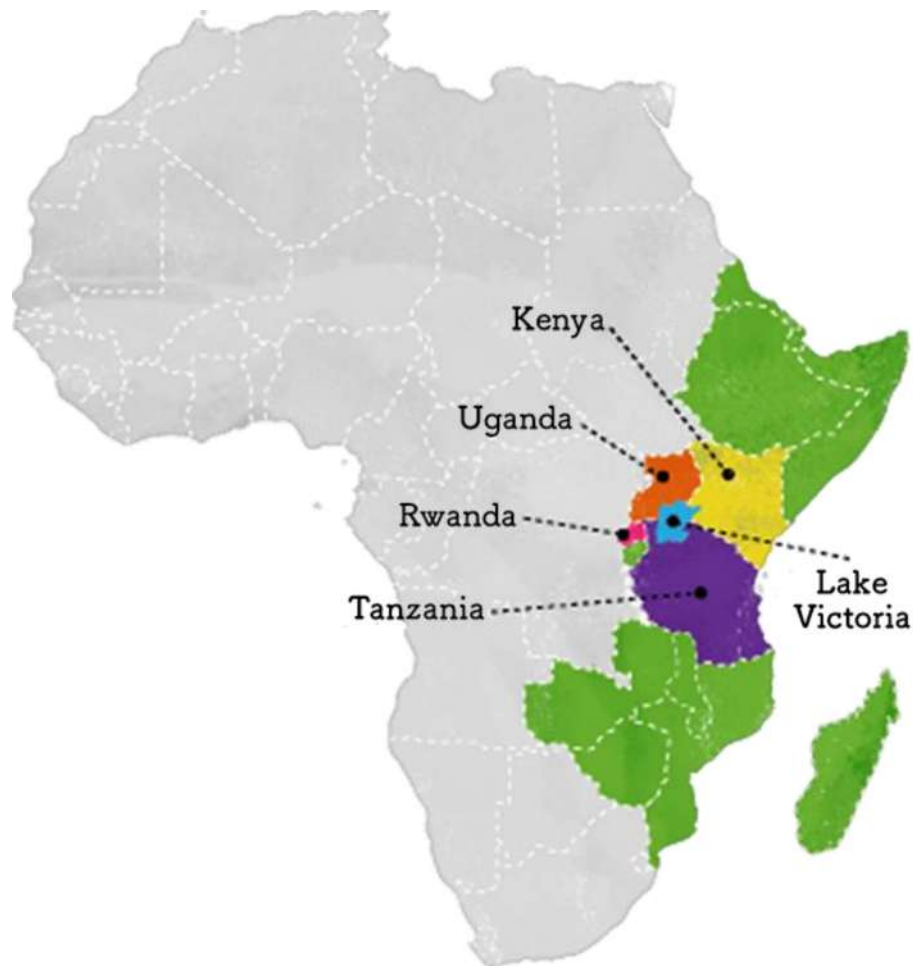
Sense of Africa is a leading
destination management
company in East and Southern
Africa supported by a global
travel management company –
Tourvest Destination
Management

Sense of  africa
more than just a journey ...

OUR AFRICAN FOOTPRINT

We've got Africa covered;
Africa Destination Experts.





EAST AFRICA DESTINATIONS

- Easy access via Europe & Middle East
- Gateway cities: Nairobi, Mombasa, Entebbe, Arusha, Dar es Salaam, Kigali and Addis Ababa
- +3:00 GMT
- Visa required
- Temperate most of the year

ENTRY REQUIREMENTS



Country	Online Visa	Visa on Arrival
Kenya	ETA	✗
Tanzania	✓	✓
Zanzibar	✓	✓
Uganda	✓	✗
Rwanda	✓	✓



Country	Yellow Fever	Local Travel Insurance
Kenya	✗	✗
Tanzania	✓	✓
Zanzibar	✓	✓
Uganda	✓	✗
Rwanda	✓	✗



KENYAN VISA

- No Visa/ETA on Arrival
- Link to the Online application:
www.etakenya.go.ke
- The application requires a valid passport, a photo, travel itinerary, and proof of accommodation.
- It is highly recommended to apply for the ETA ***at least 3 weeks before travel*** to ensure adequate time for processing.
- Normal eTA costs \$30 (Takes 72hours to process). An Expedited eTA costs an additional \$100. Valid for 90 Days.



TANZANIAN /ZANZIBAR VISA

- Visa available Online & on Arrival except for countries under the *Referral Visa Category*.
- Online portal: **visa.immigration.go.tz**. This system is available for both Tanzania Mainland and Zanzibar.
- The e-visa application requires you to submit passport information, a photo, travel itinerary, and a return ticket.
- Americans need to apply for a Multiple Entry Visa that costs \$100. Indians pay US\$ 80. Normal Visa costs \$50 and is valid for 90 Days.



UGANDAN VISA

- Uganda offers an online e-visa application system through its official immigration portal: visas.immigration.go.ug.
- The platform allows travelers to apply for various visa types, including a single-entry tourist visa and the East Africa Tourist Visa.
- Visas **must** be applied for before travel.
- Normal Tourist Visa costs \$50. Validity is 90 Days.



RWANDAN VISA

- Rwanda has a very open visa policy and nationals of all countries are eligible to get a visa upon arrival.
- Visitors can also choose to apply for their visa online in advance through the https://irembo.gov.rw/home/citizen/all_services. This offers travelers the flexibility to secure their entry permission.
- Normal Tourist Visa costs \$50. Validity is 90 days.



EAST AFRICAN VISA

- This is a single, multiple-entry visa for those visiting Kenya, Uganda, and Rwanda for tourism.
- It **must** be applied for and obtained from the immigration authorities of the country where the traveler will first enter the region.
- The EATV costs **100 USD** and is valid for **90** days from the date of first entry.
- This visa becomes invalid once the traveler leaves the three participating countries, even if the 90-day period has not expired.



TRAVEL INSUARANCE



Both Tanzania Mainland
and Zanzibar now have
mandatory local travel
insurance requirement.

MANDATORY TRAVEL INSURANCE – TANZANIA & ZANZIBAR

- **Zanzibar:** A separate mandatory insurance policy is in place for all visitors to the island, costing **USD \$44** for adults. <https://inbound.visitzanzibar.go.tz/>
- **Tanzania Mainland:** As of the 2025/2026 fiscal year, a mandatory travel insurance fee of **USD \$44** applies to visitors. This policy is valid for 92 days and covers medical emergencies, accidents, baggage issues, and rescue operations. This is a separate requirement, and will still be required even if clients have their own private travel insurance.
- Details of the portal through which the application and payment ought to be made are not out yet but once released every traveler will be required to have the insurance in place before entry into Tanzania Mainland.



SPECIAL COVERAGE FOR ADVENTURE ACTIVITIES

- While standard travel insurance is mandatory, many policies exclude high-risk adventure activities i.e.: **Gorilla & Chimpanzee Trekking**: A client's insurance must explicitly cover these trekking experiences, which are considered high-altitude or adventure sports. A dedicated clause for trekking is vital, as a standard policy may not cover injuries sustained on the trail.
- **Balloon Safaris**: Hot air balloon safaris are classified as an adventure sport. A client's policy must include coverage for this activity to avoid any issues in the event of an unforeseen incident.
- **Mountain Climbing**: For those tackling Mt. Kilimanjaro or Mt. Kenya, high-altitude trekking and mountain rescue coverage are mandatory.



EMERGENCY EVACUATION

- Emergency medical evacuation services are a critical component of travel and provide peace of mind. It is highly recommended that travelers purchase a short-term membership with a service like **AMREF Flying Doctors**, often available at an affordable fee. This ensures they can be airlifted from a remote safari lodge or camp to a well-equipped hospital in a major city in the event of a serious medical emergency.
- Our team at Sense of Africa will always be the primary point of contact on the ground to coordinate any medical assistance and evacuation with the relevant service providers and the client's insurance company.

Note: This is a separate policy from any existing private travel insurance, and travelers to both Mainland Tanzania and Zanzibar may need to purchase separate policies.





CURRENCY & PAYMENTS



Each country has its own currency, the Kenyan Shilling (KES), the Tanzanian Shilling (TZS), the Ugandan Shilling (UGX), the Rwandan Franc (RWF) and Ethiopian Birr



LOCAL CURRENCIES & EXCHANGE TIPS

Local Currencies: It is highly recommended that clients carry some local currency for small purchases, local market shopping, and tipping in smaller denominations.

Exchange Tips: It is advisable to exchange currency at a reputable forex bureau or a major bank in a city. Avoid street vendors. For the best exchange rates, it is always wise to carry large, crisp USD bills (\$50s and \$100s) as smaller denominations often receive a less favorable rate.



USE OF USD FOR PAYMENTS

- The USD is widely accepted in the tourism sector, especially for larger payments like safari lodge bills, park fees (although some are now cashless), and tour packages.
- It is crucial that any USD notes carried are from 2006 for Tanzania, 2009 for Kenya, 2013 for Uganda and Rwanda or later and are in perfect condition (no tears, stamps, or marks), as **older or damaged bills are often rejected.**



ATM AVAILABILITY & CREDIT CARD USAGE

- Major hotels, lodges, and tour operators in the main cities and tourist hubs accept credit cards, primarily Visa and MasterCard. However, a surcharge of **3-5%** is common for card payments.
- It is essential to note that in remote areas, Wi-Fi connectivity can be unreliable, making credit card payments impossible.
- We recommend that clients withdraw cash in major urban centers like Nairobi, Arusha, or Kigali before beginning their safari. They should also inform their bank of their travel plans to prevent their card from being blocked for suspicious international activity.



FLIGHTS & REGIONAL CONNECTIVITY



A variety of flight options into the different East African Countries has made travel into and within the destination easy.

AIRLINES

The East African aviation market has seen significant growth since 2024, driven by both international and regional carriers. New and expanded services from the Middle East, Europe, Asia, and other parts of Africa have increased connectivity for both business and leisure travel. Local and regional airlines have also expanded their networks, providing more options for intra-Africa travel. This expansion reflects East Africa's growing importance as a hub for tourism and trade.





ADDITIONAL FLIGHT FARES

- Tanzania introduced a new charge/fee called the “Passenger Facilitation Fee - VI Tax”.
- This fee will apply to all international travelers starting 01st November 2025.
- \$45 one-way & \$90 two-way.



CHARTER OPTIONS AND LUGGAGE RESTRICTIONS

- **Charter Flights:** For ultimate flexibility, private charter flights are available, offering exclusive direct service to remote airstrips.
- **Luggage Restrictions:** Most domestic and charter flights operate with small aircraft, and luggage is strictly limited. The standard allowance is 15 kg (33 lbs) per person, inclusive of hand baggage. Only soft-sided bags or duffels are permitted as hard-shell suitcases cannot be accommodated in the luggage compartments of these smaller planes.
- Clients with **excess baggage** can arrange for a "freight" seat in advance to carry additional weight, or arrange to store their luggage at their arrival city hotel for a fee.



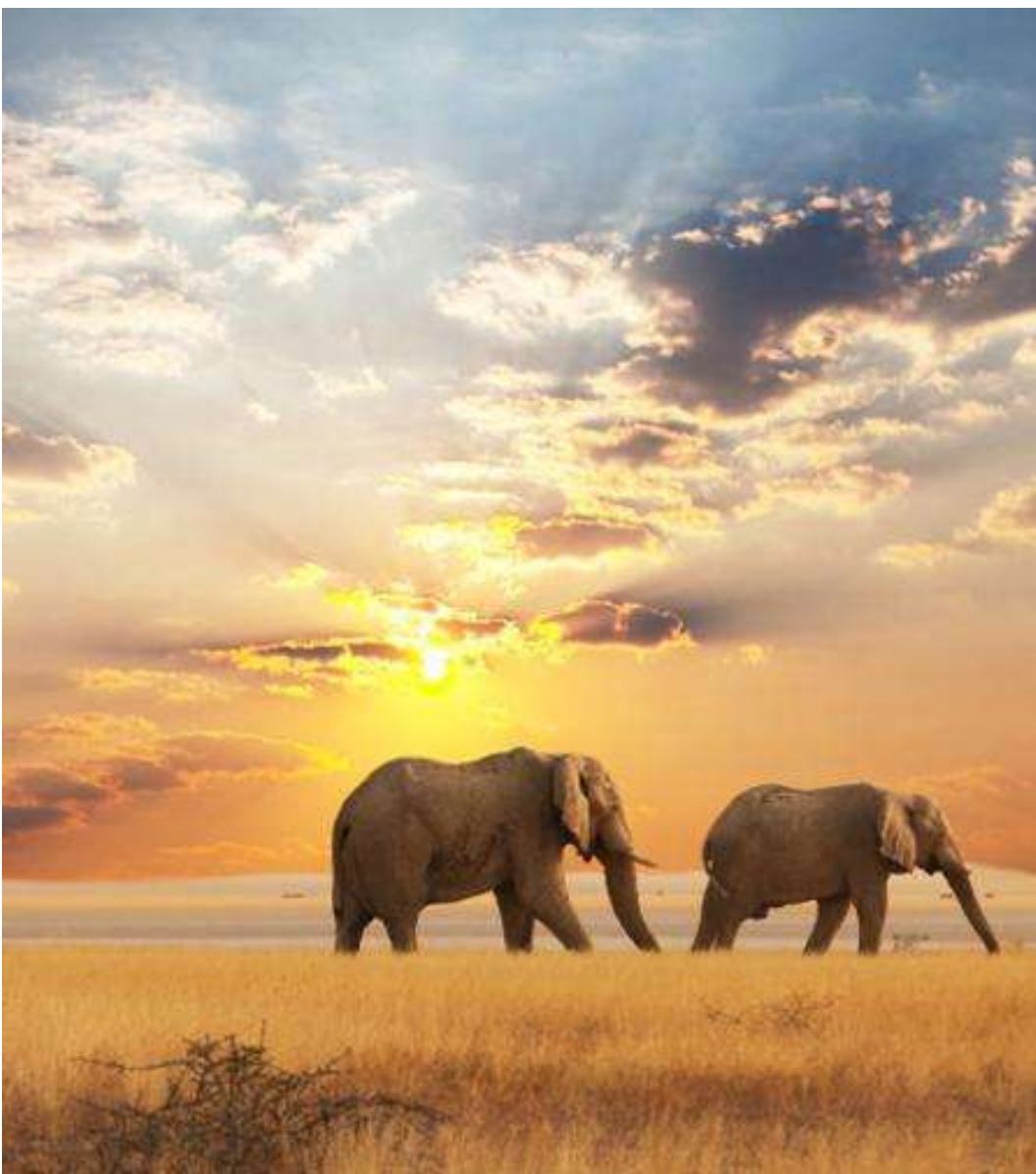
WEATHER

East Africa is usually cool at night and early in the morning inland due to higher elevations.

Coastal areas are warm and humid

The "**long rains**" season occurs from March/April to May/June.

The "**short rains**" season occurs from October to November/December. The rainfall is sometimes heavy and often falls in the afternoons and evenings.



SEASONS

- **Safari is possible all year round**
- Low Season: April, May and November (rainy)
- Mid season: January–March, June, first half of December
- Peak Season Kenya: July – October
- Peak season Tanzania: February, July - October
- Accommodation bottlenecks in peak season



LOW & MID SEASON TRAVEL

- No overcrowding, enjoy your space
- You get all the attention
- Possible to see/do pretty much everything
- Set/a la carte menu in some lodges as opposed to buffets
- Lower occupancy hence special offers
- Potential for room upgrades
- Single room supplement waivers
- Rates ca. 30% lower during low season

EAST AFRICA'S TOURISM ATTRACTIONS & DIVERSITY

Flora & Fauna	Beach Product	Adventure Travel	Special Interest Tours	Activities
<ul style="list-style-type: none">• Wildlife safaris• Bird watching• Variety of landscapes	<ul style="list-style-type: none">• Kenya coast• Zanzibar• Ocean sports and activities• Coastal cultural and historic tour	<ul style="list-style-type: none">• Horseback safaris• Camel safaris• Mountain climbing• Biking tours• White water rafting, kayak, bungee jumping	<ul style="list-style-type: none">• Honeymoon• Family holidays• Coffee estate tour• Tea farm tours• Sustainable initiatives• City excursions• Incentive travel• Sports Travel	<ul style="list-style-type: none">• Hot air balloon rides• Nature walks• Sundowners• Cultural visits• Kids' activities• Boat rides• Bush meals



PARK FEES & PERMITS



New Park Fees for
Kenya & Tanzania

UPDATED PARK FEES FOR KENYA & TANZANIA

- Proposed Park fees changes by the Kenya Wildlife Service (KWS) in Kenya for 2025/2026, are expected to take effect in **January 2026**. All park fee payments are also now cashless and must be made via the official government portal [eCitizen](#).
- Premium Parks i.e., Amboseli, Nairobi National Park now have a proposed higher rate, which will vary by season. Entry fees for non-residents will be around USD 80 to USD 100 per adult per day.
- In Tanzania, there is a proposed 15 % annual increase on all Park fees for 5 years (2026/2027 – 2030/31).
- Additional New Park Fees for Special Zones in Northern Serengeti Fees \$100 (Inside the Park stay) & \$150 (Outside the park stay)

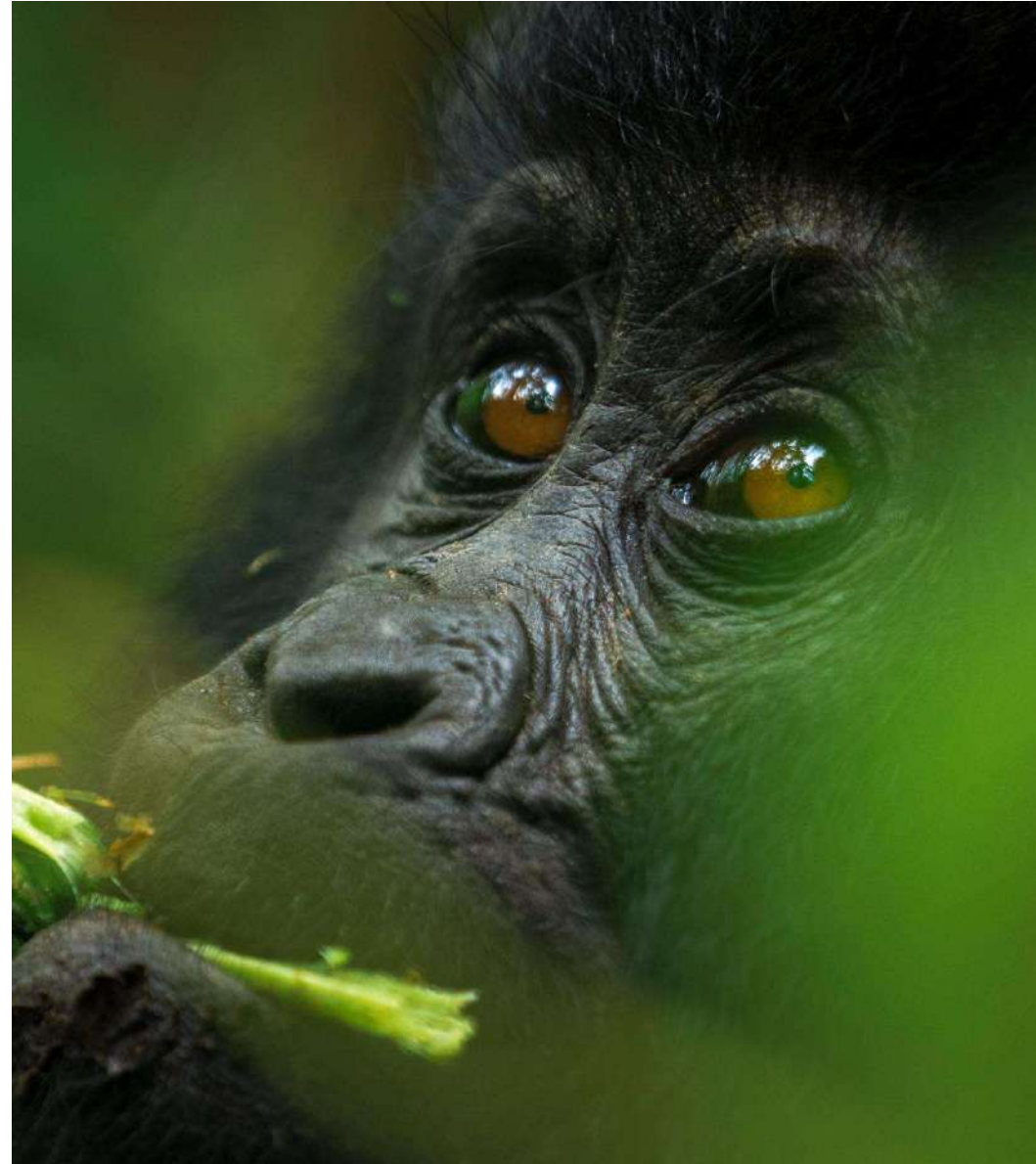


PROPOSED PARK FEES INCREASE FOR FIVE YEARS FROM 2026/2027 TO 2030/2031

				YEAR 1		YEAR 2		YEAR 3		YEAR 4		YEAR 5
	CATEGORY	EXISTING FEE	15% INCREASE for 2026/27	PROPOSED FEE FOR 2026/2027	15% INCREASE for 2027/28	PROPOSED FEE FOR 2027/2028	15% INCREASE for 2028/29	PROPOSED FEE FOR 2028/2029	15% INCREASE for 2029/30	PROPOSED FEE FOR 2029/2030	15% INCREASE for 2030/31	PROPOSED FEE FOR 2030/2031
1.	Conservation Fee for Serengeti National Park - 15% increase	70	11	81	12.075	93	13.89	107	15.969	122	18.36	140
2.	Concession Fee for Serengeti special Zones (North, Central and south) 15% increase	60	9	69	10.35	79	11.9	91	13.688	105	15.74	120
3.	Conservation Fee for Kilimanjaro National Park - 15% increase	70	11	81	12.075	93	13.89	107	15.969	122	18.36	140
4.	Conservation Fee for Tarangire National Park - 15% increase	50	7.5	58	8.625	66	9.919	76	11.407	87	13.12	100
5.	Conservation Fee Mikumi National Park - 15% increase	30	4.5	35	5.175	40	5.951	46	6.8439	53	7.871	60
6.	Conservation Fee Ruaha National Park - 15% increase	30	4.5	35	5.175	40	5.951	46	6.8439	53	7.871	60
7.	Northern Serengeti Special Zone (Overnight stay inside Serengeti)	100		100		100		100		100		100
8.	Northern Serengeti Special Zone (Overnight stay outside Serengeti)	150		150		150		150		150		150

SPECIAL TREKKING PERMITS

- It is critical to book all trekking permits well in advance, as they are usually limited and sell out quickly.
- Rwanda: Permits for Volcanoes National Park are currently USD 1,500 per person for a one-hour viewing as part of Rwanda's high-end tourism strategy.
Uganda: Permits for parks like Bwindi Impenetrable and Mgahinga Gorilla are more accessible at **USD 800** per person.
- Uganda also offers a unique four-hour Gorilla Habituation Experience for **USD 1,500** per person.
- Permits for chimpanzee trekking, notably in Uganda's Kibale Forest National Park, are also required and cost approximately **USD 250** per person.



AMBOSELI
NATIONAL PARK
HUGE HERDS OF
ELEPHANTS



20 MILLION YEARS OLD
GREAT RIFT VALLEY



NAMED AFTER
MOUNT KENYA

A THE MOST
E EXPORTED
T PRODUCT

TRADITIONAL
MAASAI
JUMPING DANCE



THE GREAT MIGRATION
JUNE TO OCTOBER

1.5 MILLION
WILDEBEEST

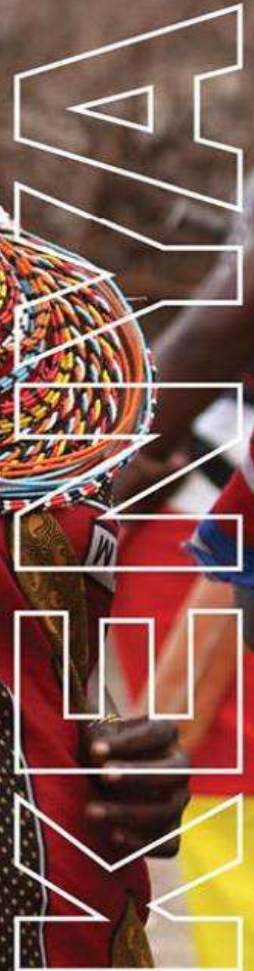


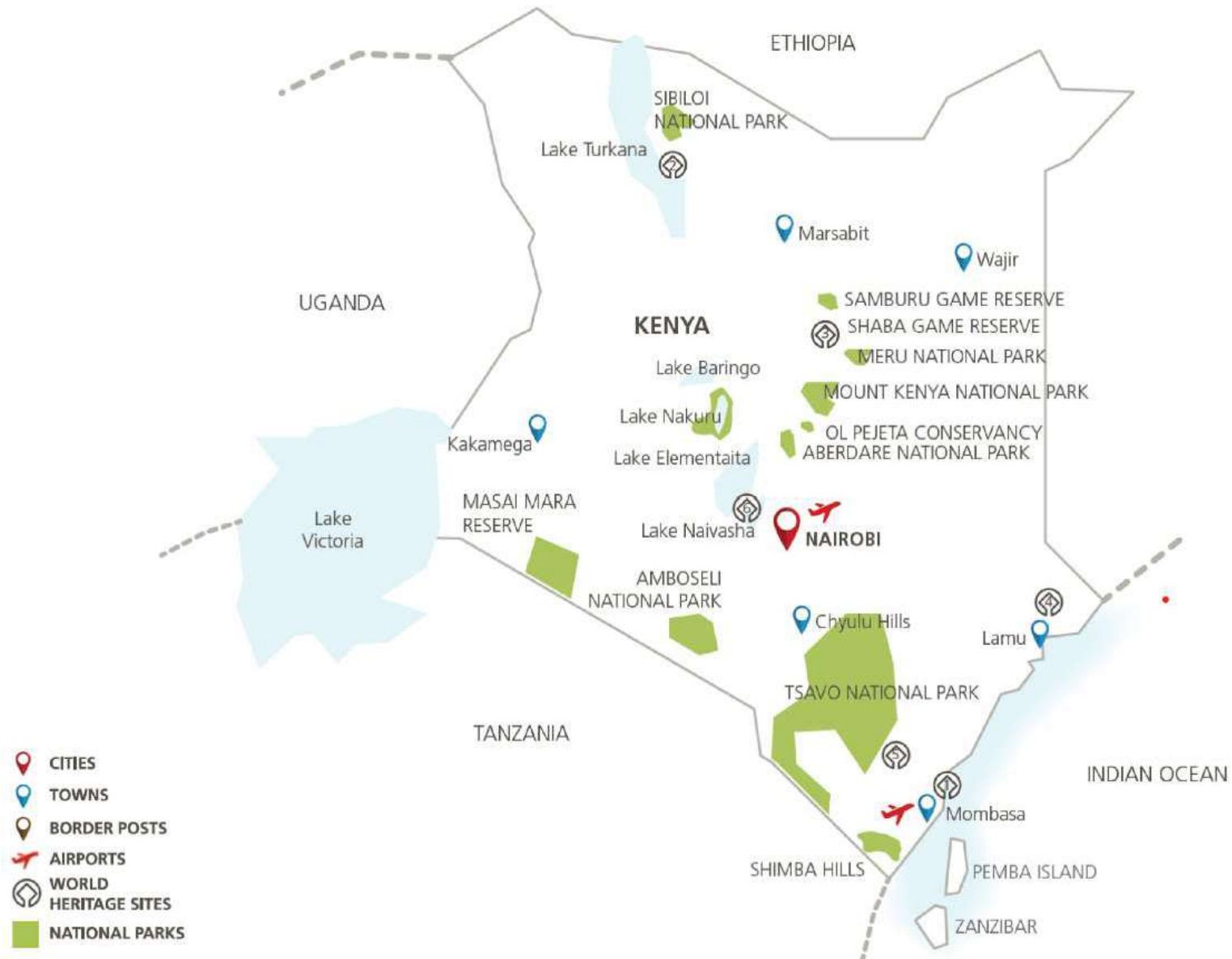
2 SEASONS
DRY
AND
RAINY

HOME OF



ELSA
THE LIONESS
"BORN FREE"





KENYA

Northern Circuit

- Samburu Game Reserve
- Mt Kenya
- Laikipia
- Aberdare Mountain Range

Great Rift Valley tourist circuit

- Great Rift Valley
- Lakes – fresh and salt water
- Masai Mara National Reserve

Southern Circuit

- Amboseli National Park
- Tsavo East and West National Parks

Beach Circuit

- Mombasa / north coast
- Diani / south coast
- Lamu Island
- Shimba Hills National Reserve



Mombasa



- Kenya coast: from Lamu to Diani
- Pristine white beaches, warm oceans
- Historic sites and cultural attractions
- Water sports and coastal excursions



DEEPEST
LAKE IN AFRICA

LAKE TANGANYIKA

1,470m

LARGEST INTACT CALDERA



NGORONGORO
CRATER

HIGHEST MOUNTAIN IN AFRICA

5 895m

**MOUNT
KILIMANJARO**



LARGEST PROTECTED
WILDERNESS RESERVE IN AFRICA
**NYERERE
GAME RESERVE**



**TREE
CLIMBING
LIONS**

LAKE MANYARA NATIONAL PARK

WORLD HERITAGE SITE
**STONE TOWN,
ZANZIBAR**

'MJI MKONGWE' IN SWAHILI



LARGEST COUNTRY
IN EAST AFRICA
945 087 km²

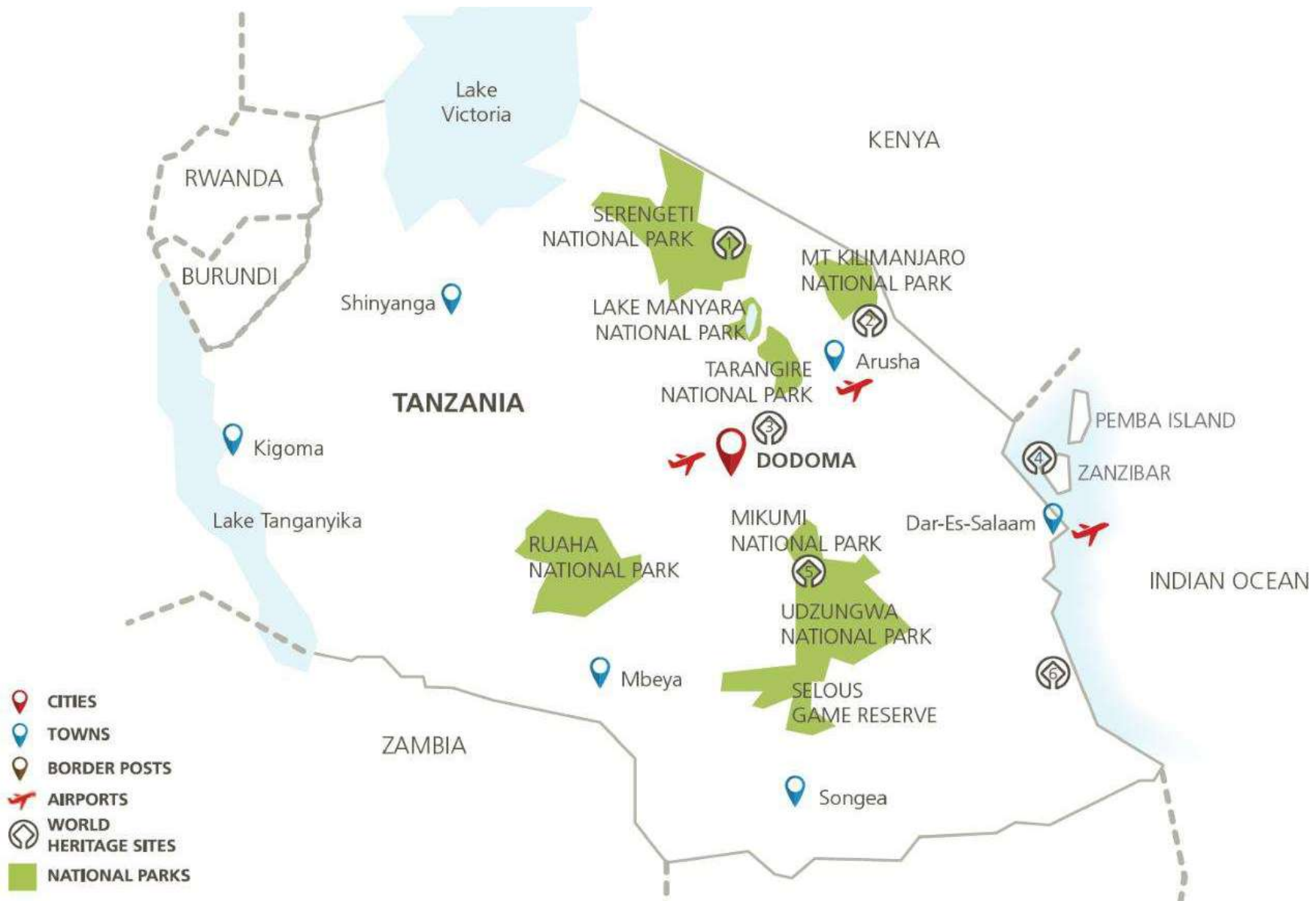
LARGEST POPULATION OF



**AFRICAN
WILD DOGS
IN AFRICA**



TANZANIA



TANZANIA

Northern tourist circuit

- Arusha town
- Arusha National Park
- Kilimanjaro National Park
- Serengeti National Park
- Tarangire National Park
- Lake Manyara National Park
- Ngorongoro Conservation Area
- Ndutu
- Olduvai Gorge - prehistoric fossils

Coastal and southern circuit

- Dar es Salaam City
- Islands: Zanzibar, Pemba and Mafia
- Saadani National Park
- Nyerere Game Reserve
- Mikumi National Park
- Ruaha National Park
- Udzungwa Mountains National Park

Western circuit

- Lake Tanganyika
- Gombe Stream National Park
- Mahale Mountains National Park
- Katavi National Park





ZANZIBAR

- Historical Stone Town
- White Sandy beaches
- Pemba Island



TALLEST MOUNTAIN RANGE IN AFRICA
**RWENZORI
MOUNTAINS**
"MOUNTAINS OF THE MOON"

**TOP
10**  **COFFEE
PRODUCING**



6 853 km
NILE RIVER
ORIGINATES IN UGANDA



50 VARIETIES
AFRICA'S
**BANANA
REPUBLIC**



800 000
TOURISTS
A YEAR

MORE THAN
5000
CHIMPANZEES



**BWINDI
NATIONAL PARK
MOUNTAIN
GORILLAS**

3

**UNESCO WORLD
HERITAGE SITES:**
TOMBS OF BUGANDA KINGS
BWINDI IMPENETRABLE NATIONAL PARK
RWENZORI MOUNTAINS NATIONAL PARK

UGANDA



Uganda

The Gorilla & Chimpanzee Circuit:

Bwindi Impenetrable National Park: Home to a large population of mountain gorillas in a lush, dense rainforest.

Kibale National Park: Famous for chimpanzee trekking and its high diversity of other primates and bird species.

Mgahinga Gorilla National Park: Another destination for gorilla trekking, located on the slopes of volcanic mountains.

The Savannah & Wildlife Circuit:

Murchison Falls National Park: Offers wildlife viewing, including elephants, giraffes, and buffalo, with famous boat trips to the powerful Murchison Falls.

Queen Elizabeth National Park: Known for its diverse ecosystems, including savannahs, forests, and wetlands, and for the tree-climbing lions of Ishasha sector.

Lake Mburo National Park: A more accessible park for game drives and activities like horseback riding, offering excellent birdwatching.

Kidepo Valley National Park: Located in the remote northeast, it provides a truly wild and scenic safari experience.

Adventure & Mountain Circuits:

Rwenzori Mountains National Park: For trekkers and climbers interested in the snow-capped peaks and glaciers of the "Mountains of the Moon".

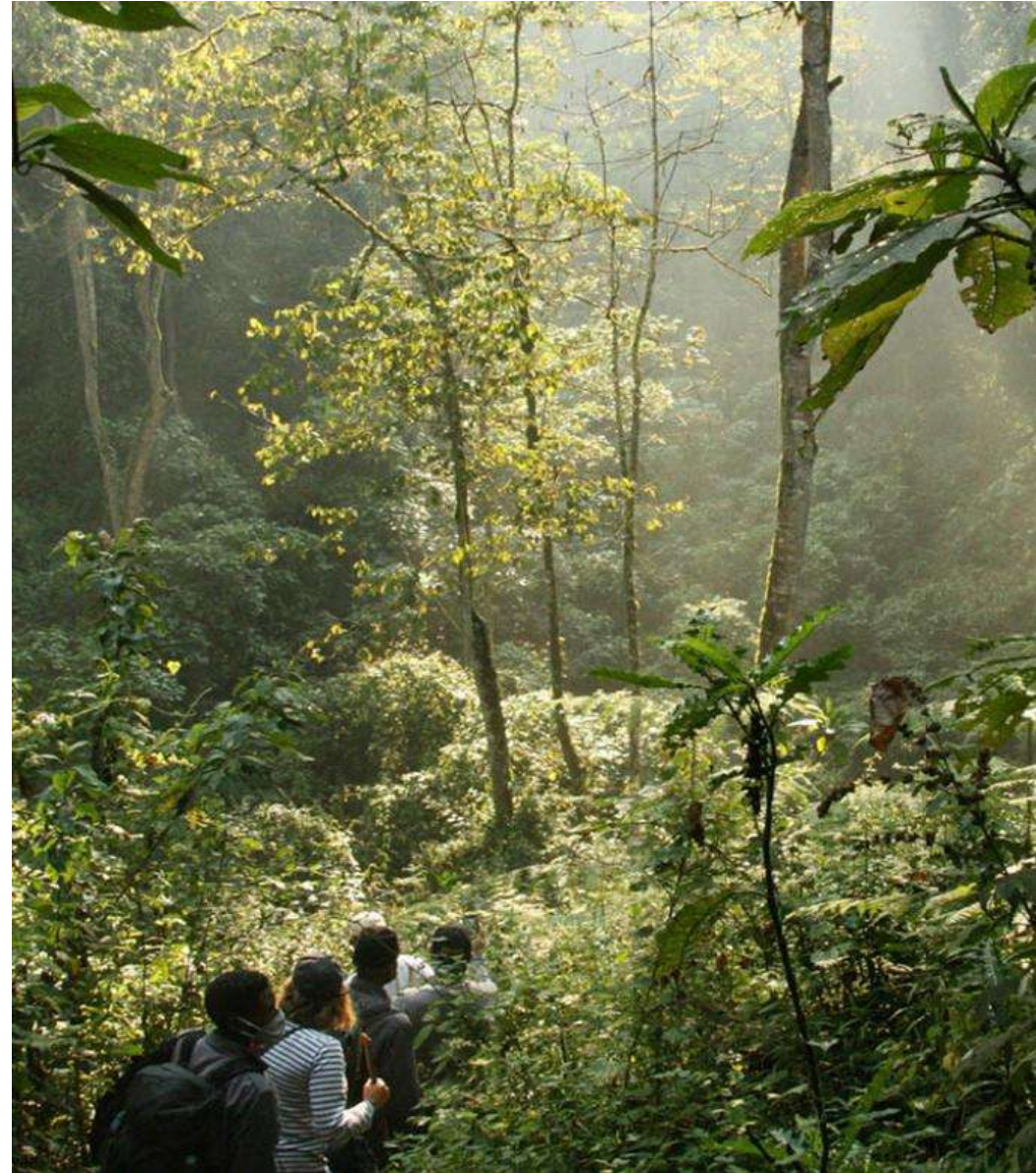
Mount Elgon National Park: Features dormant volcanic peaks and offers challenging hikes and beautiful scenery.

Other Key Attractions:

Ziwa Rhino Sanctuary: The only place in Uganda where you can see white rhinos in the wild.

Lake Bunyonyi: A scenic lake with beautiful islands, often used as a relaxing spot after a safari.

Mabamba Swamp: A popular spot for birdwatching, especially for the rare Shoebill.



 A
TOP TEA
& COFFEE
PRODUCING COUNTRY


SAFARI IN
AGKAGERA
NATIONAL PARK


GET FACE TO FACE
WITH MOUNTAIN
GORILLAS

 CLIMB
VOLCANOES
NATIONAL PARK

CHIMPS IN THE WILD

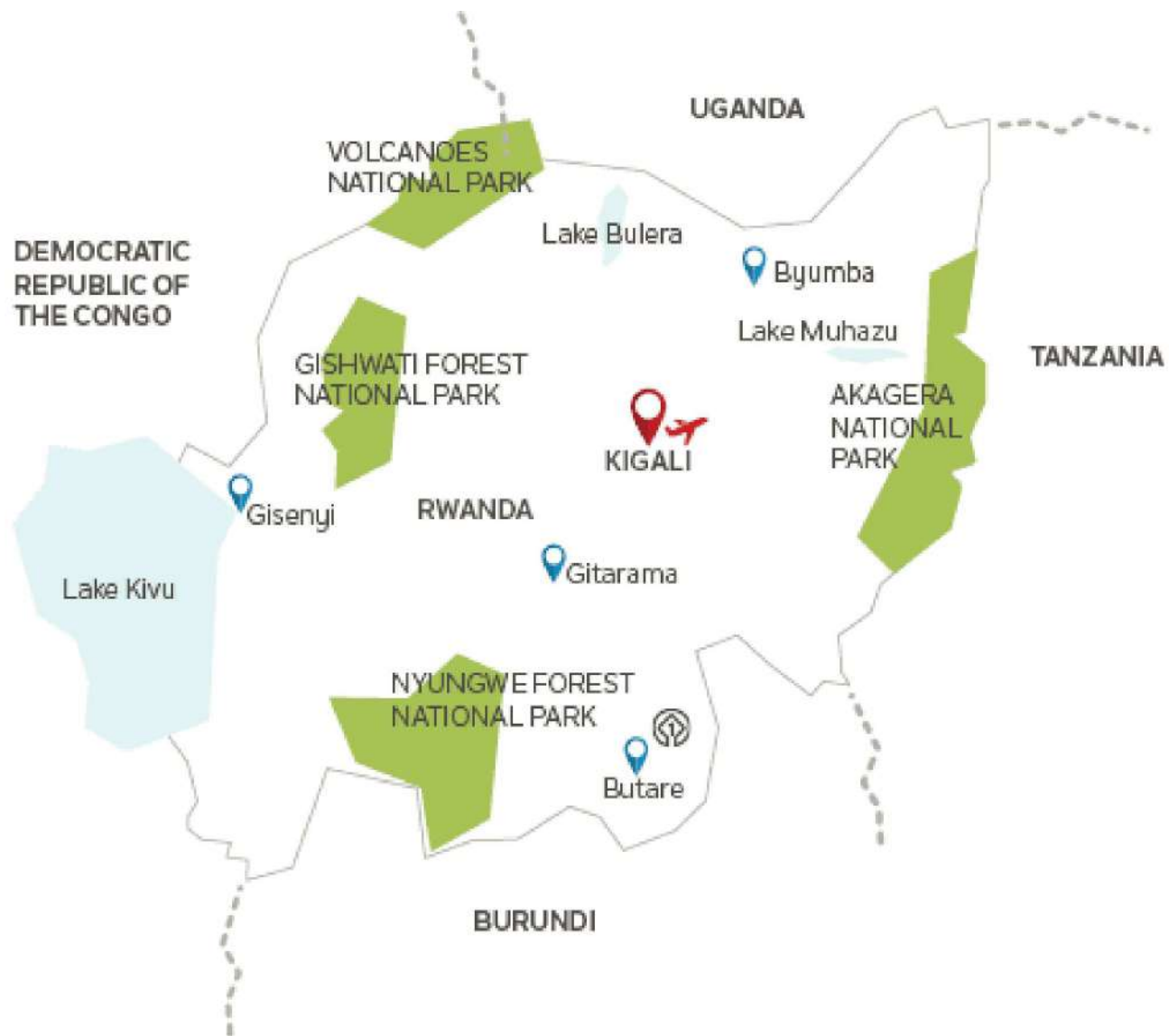


DIAN
FOSSEY'S
TOMB

BUTARE'S
ETHNOGRAPHIC
MUSEUM 

 KIGALI
GENOCIDE
MEMORIAL

RWANDA



Rwanda

For Wildlife & Nature Lovers

Volcanoes National Park: Famous for mountain gorilla trekking and golden monkey tracking.

Nyungwe Forest National Park: An ancient rainforest with incredible biodiversity, offering chimpanzee trekking and a canopy walk.

Akagera National Park: The place for a classic safari to see the Big Five (lions, leopards, buffaloes, rhinos, and elephants), along with giraffes and a boat trip on the lakes.

Gishwati-Mukura National Park: Two small forests offering wildlife and community-based activities.

For Culture & History Enthusiasts

Kigali: A visit to the Kigali Genocide Memorial is a must, alongside exploring the city's vibrant art galleries.

Iby'iwacu Cultural Village: Experience Rwandan culture at this interactive village.

Museums: Explore the King's Palace Museum and the Ethnographic Museum to learn about Rwanda's past.

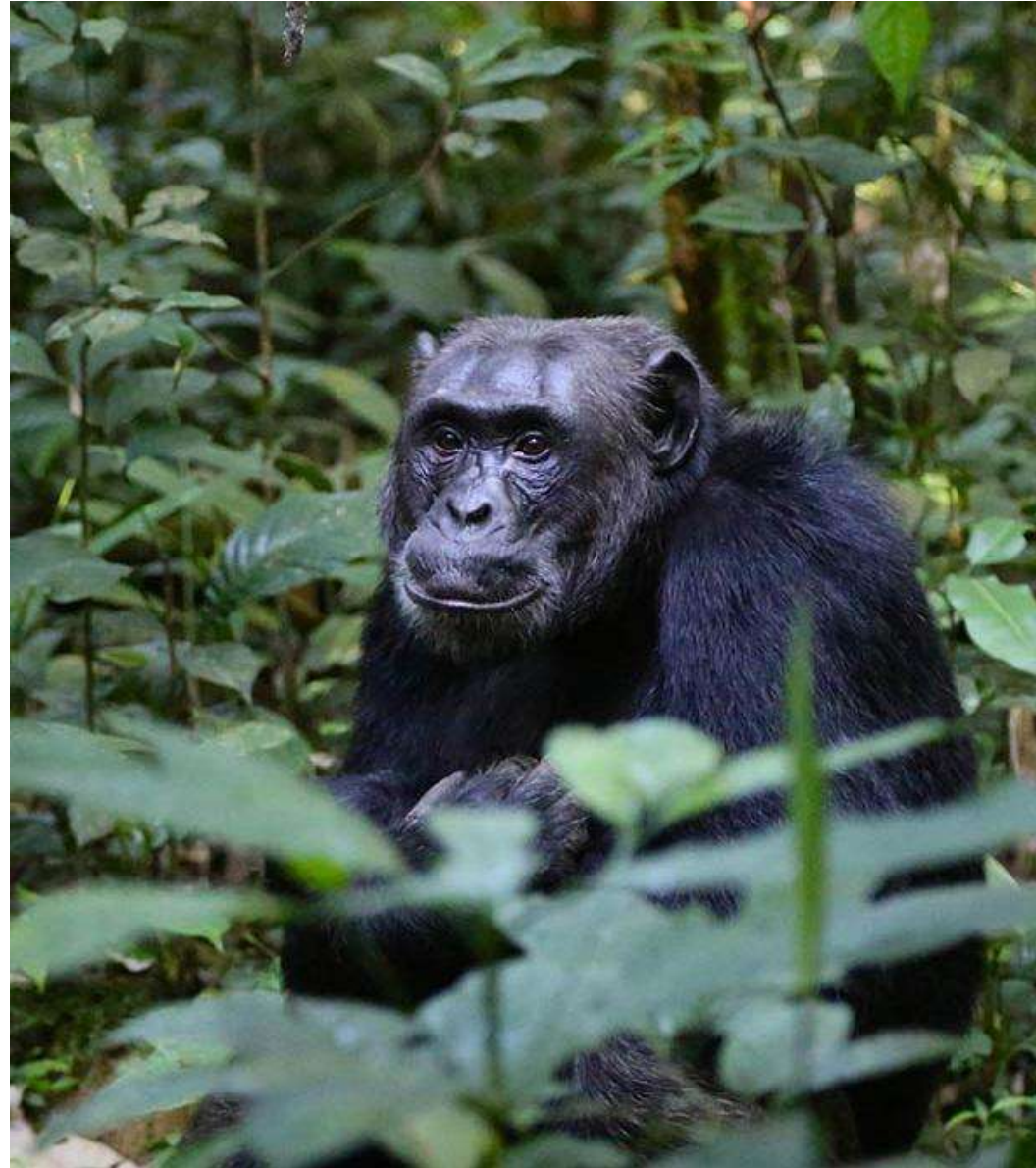
For Adventure & Relaxation

Lake Kivu:

A scenic lake in the Rift Valley, perfect for relaxation and water activities.

Congo-Nile Trail:

A popular trail for hiking and cycling along the Congo-Nile divide, offering stunning views.





KIDS ON SAFARI



- Family rooms
- Children's rates
- Kids' activities
- Customised safaris
- Large choice of suppliers that offer activities for kids



ACCOMMODATION TYPES



- City hotels – leading international brands
- Beach resorts and villas
- Small, exclusive tented camps
- Luxury retreats
- Lodges averaging 70 rooms
- Home hosted options
- Special Accommodation



TRANSPORT

- New 4x4s vehicles between Kenya and Tanzania
- With pop-up roofs, 6 window seats each
- Fitted with A/C (front and rear), fridges, charging stations, guidebooks and white labelling
- Comfortable vans for city & coastal transfers
- Meet and greet services for all arrivals



TRAVEL BY TRAIN

Nairobi city to Amboseli or Tsavo National Parks
Kenya coast to Amboseli or Tsavo National Parks



DOMESTIC FLIGHTS

- Flights into the national parks and coastal destinations
- Scheduled and private charters available
- Helicopters for transfers and scenic tours



TAKING CARE OF THE ENVIRONMENT

- August 2017: Plastic carrier bags banned Kenya
- June 2019: Plastic carrier bags banned Tanzania
- October 2019: Rwanda bans ALL single use plastics (bags, bottles, cutlery, straws & more)
- Feb 2020: Uganda bans plastic bags
- June 2020 Kenya: no single-use plastic bottles, straws and related products in protected areas
- June 2020 Kenya and Tanzania:
Drinking water dispensers inside our safari vehicles and reusable, refillable water bottles for clients

ASANTE SANA



Email:
info@senseofafrica.co.ke

Website:
www.senseofafrica.com

Sense of  africa
more than just a journey ...