

The best way to fly



AIRKENYA PRESENTATION
Safari in the Skies

Who We Are

- At Airkenya, every journey tells a story — one that intertwines adventure, comfort, and unparalleled service.
- As a premier domestic airline, we specialize in bush flying across East Africa, connecting travelers to breathtaking safari destinations and vibrant cultural experiences.
- Based at Wilson Airport in Nairobi, with our subsidiaries AeroLink Uganda at Entebbe International Airport and Regional Air Services at Arusha Airport, we seamlessly link you across the three countries.
- With 12 iconic safari destinations in Kenya, Airkenya ensures that every flight is a gateway to unforgettable memories.

ROUTE NETWORK

“WE ARE
THE BEST
SAFARI
AIRLINE IN
EAST
AFRICA”



AIRKENYA

- | | |
|----------------|-------------|
| 1. Amboseli | 8. Samburu |
| 2. Kilimanjaro | 9. Migori |
| 3. Lewa Downs | 10. Loisaba |
| 4. Masai Mara | 11. Kisumu |
| 5. Meru | 12. Entebbe |
| 6. Nairobi | |
| 7. Nanyuki | |



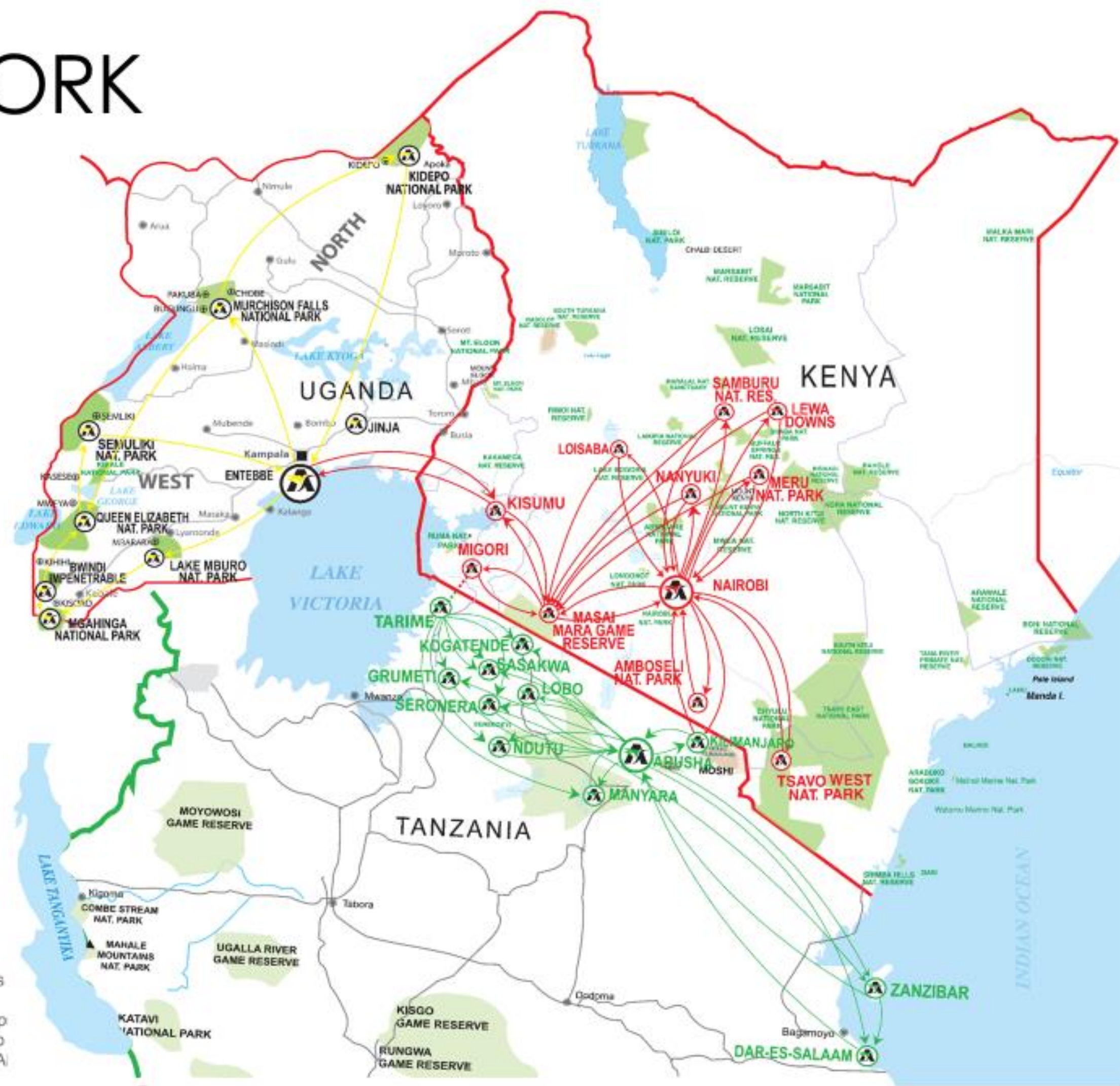
REGIONAL AIR

1. Arusha
2. Kilimanjaro
3. Kogatende
4. Lake Manyara
5. Lobo
6. Ndutu
7. Seronera
8. Zanzibar
9. Tarime



AEROLINK

1. Bwindi Impenetrable Forest
- Kihiki and Kisoro airstrips
2. Queen Elizabeth National Park
- Kasese, Mweya and Semliki airstrips
3. Murchison Falls National Park
- Pakuba, Bugungu and Chobe airstrip
4. Kidepo National Park - Kidepo Airstrip
5. Lake Mburo National Park - Mbarara A
6. Entebbe - Mara Via Kisumu





Connecting Wildlife Safaris in East Africa



Eighth Wonder Of The World

- 3 Daily Flights to the Masai Mara
- Witness the Great Migration of wildebeest and zebras between the Mara and the Serengeti and the Big Five.
- We offer flights to several airstrips in the Mara including
 - Keekorok
 - Kichwa Tembo
 - Musiara
 - Mara North
 - Ngerende
 - Olkiombo
 - Olare Orok
 - Olseki
 - Serena



Home Of Tuskers

- Daily Flights to Amboseli airstrip.
- The park is renowned for its large herds of elephants with long tusks (Tuskers).
- A unique feature of Amboseli National Park is its breathtaking views of Mount Kilimanjaro, the tallest mountain in Africa.
- Amboseli is home to over 400 bird species.



© Amboseli Trust for Elephants

Northern Frontier

- Daily Flights to Samburu (Kalama & Buffalo Airstrips), Lewa Downs, Loisaba, Nanyuki, Olpajeta (Kamok Airstrip) and Meru (Kinna Airstrip)
- The northern frontier is home to the Samburu Special Five: the Grevy zebra, Somali ostrich, reticulated giraffe, gerenuk, and Beisa oryx.
- Loisaba Conservancy is Kenya's newest Eastern black rhino sanctuary while Meru National Park is the historic home of Elsa the Lioness.



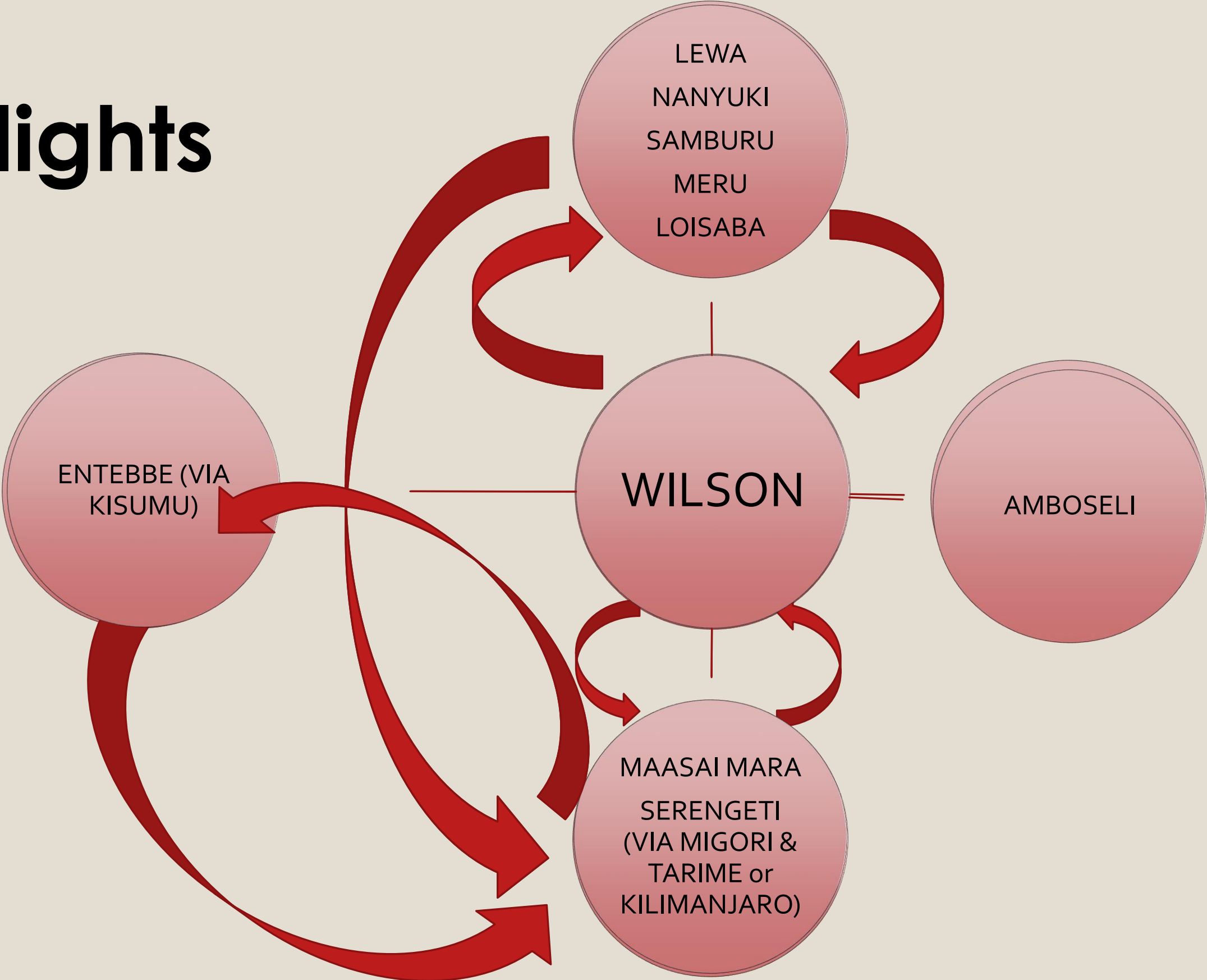
Connecting Flights

East → West

North ↔ South

Kenya ↔ Tanzania

Kenya ↔ Uganda



Connecting Tanzania Mara – Serengeti – Mara

Breakfast in the Mara – Lunch in the Serengeti



Seamless

Convenient

Guaranteed

Comfortable

Our Fleet

Cessna Grand Caravan C208

1 in AirKenya

3 in Regional

3 in Aerolink

Capacity: 11 Seats

Twin Otter – Dash 6

3 in AirKenya

Capacity: 18 Seats



Our Fleet

Dash 8

3 in AirKenya

1 in Regional

Capacity: 37 Seats



Dash 7

1 in AirKenya

Capacity: 49 Seats



The Only Airline in Kenya To Own & Operate

- Twin Otter (three)



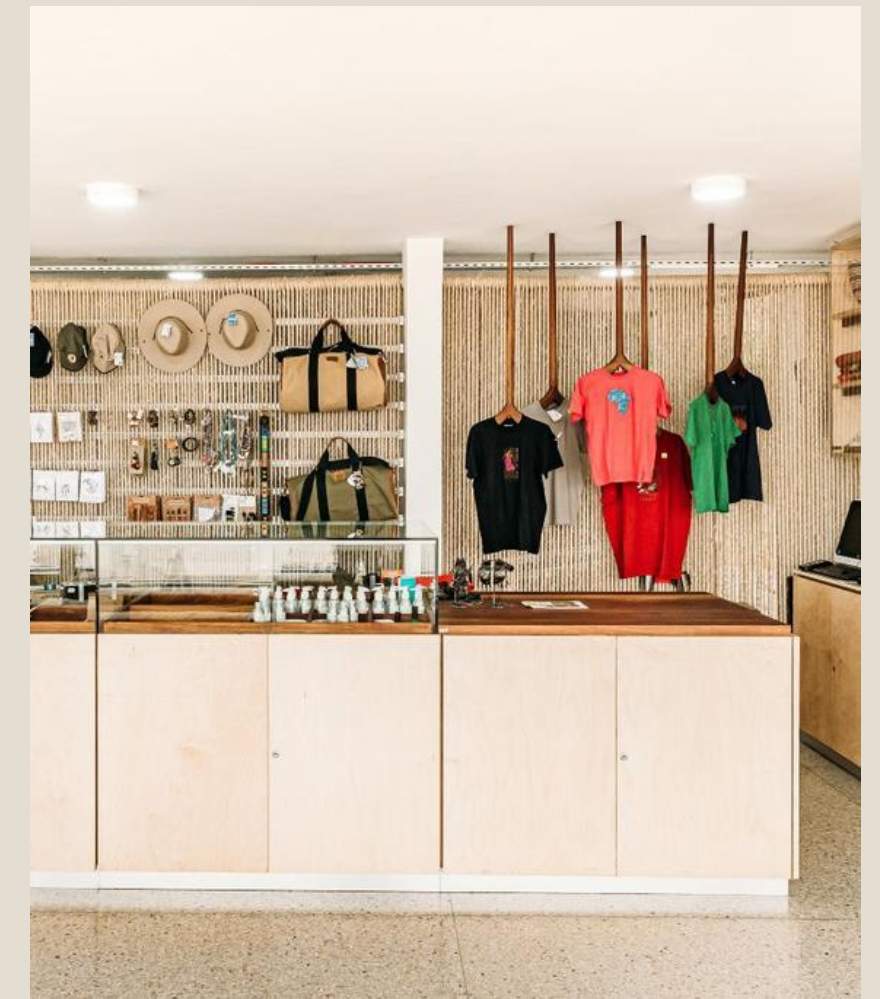
- Dash 7 (two)





OUR PASSENGER LOUNGE

New Look of our
Exclusive Passenger
Terminal at Wilson
Airport





Arrival Terminal

- Exclusive Arrivals Terminal at Wilson Airport which features a spacious baggage retrieval area and washrooms, ensuring a seamless, stress-free conclusion to your safari.

Baggage Policy - 15 kgs per person





Do you need a soft bag?

- We allow a maximum luggage of 15Kgs per person in soft bags (including carry-on luggage)
- If you do not have a soft bag, purchase one during check-in @ USD 20 only
- We store for you any of the larger suitcases that can't fit in our luggage hold and any extra luggage you may want to leave behind absolutely free!!



Extra luggage?

- Excess baggage at the Check-in counter will be charged at **\$5/kg** for both domestic and international flights.
- For a bundle of between **1–10kgs**, pay a flat rate of **USD 50** before 48 hours to flight departure.
- Advance purchase of excess baggage is limited to 10kgs per passenger
- We offer Freight Space (Seat) at child fare and allows upto 75kgs extra.

Charter Services



We also offer chartered flights to and beyond our route network. Ideal for families, incentive groups and VIP's.

Why Charter ?

- Airkenya Charter Services provides tailormade services whose client's nature of travel requires more than what our schedule services can offer.
- From Individual needs to Incentive groups and corporate requirements

CUSTOMIZED SERVICES

Hangar Set up and offer
complimentary tea/coffee/water

Branded materials e.g.
Banners/headrests/stickers/inflight
services

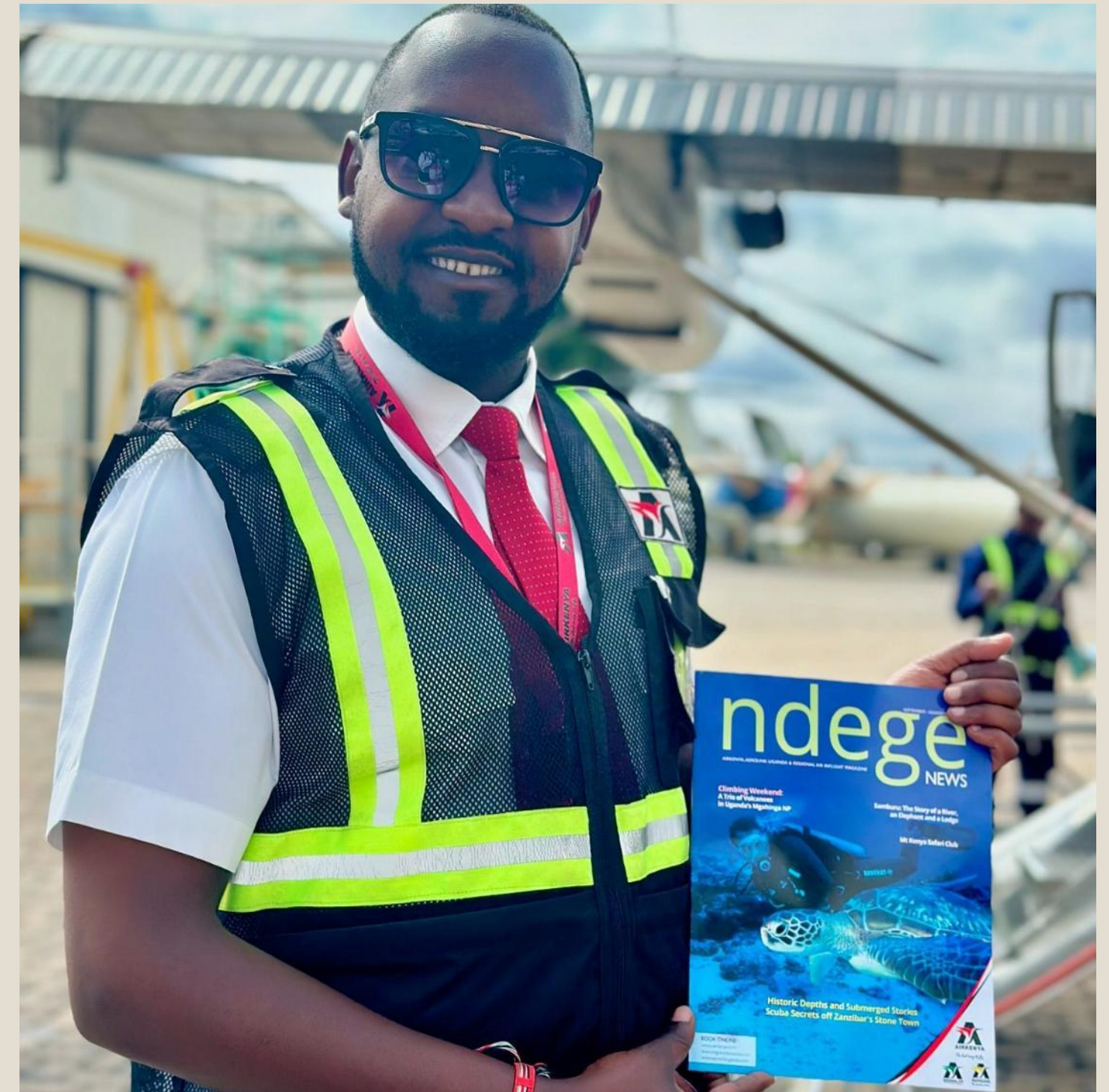
Group photos



Why Airkenya

- **Legacy Brand:** Airkenya has a long-standing reputation for quality, flexibility, friendly service, and safety in the aviation industry.
- **Strong Regional Presence:** Operates in Kenya (Airkenya), Tanzania (Regional Air), and Uganda (AeroLink), connecting major safari destinations in the three countries.
- **Convenience and Accessibility:** Provides bespoke scheduled flights to key tourist destinations, offering seamless travel connections for passengers.
- **Experienced Workforce:** The team's deep and extensive knowledge of East African airspace and its unique challenges ensures operational reliability.
- **Exclusive Terminals:** Airkenya offers superb personalized service with its exclusive passenger departure and arrival terminals.

- **Operational Reliability:** Airkenya guarantees connections within its network, consistently finding solutions when there are disruptions, with no flight cancellations.
- **In-flight Magazine:** Promotes East African destinations as well as high-end accommodation options, offering a distinct customer experience.
- **Efficient Flight Planning Systems:** Utilizes paperless systems like Flight Planner and Electronic Flight Bag (EFB) to streamline operations and improve connectivity.
- **Call Centre and Customer Service:** Improved communication with trade partners through an efficient communication system, such as Whatsapp.
- **CSR Initiative in Conservation:** Partnership with 9 organizations in wildlife conservation activities at our key destinations, Mara, Amboseli and Northern Kenya.





Aircraft Maintenance

- We are fully licensed to maintain our Group aircraft.
- We offer these services to other local airlines as our customers.

THANK YOU FOR YOUR TIME

A 3D yellow question mark is positioned in the center of the frame, standing out against a dark, textured background filled with numerous 3D dollar signs. The scene is enclosed within a thin white rectangular border.

ANY QUESTIONS?